



Magnetic reconnection in a weakly ionized plasma

James E. Leake, Vyacheslav S. Lukin, and Mark G. Linton

Citation: [Phys. Plasmas](#) **20**, 061202 (2013); doi: 10.1063/1.4811140

View online: <http://dx.doi.org/10.1063/1.4811140>

View Table of Contents: <http://pop.aip.org/resource/1/PHPAEN/v20/i6>

Published by the [AIP Publishing LLC](#).

Additional information on Phys. Plasmas

Journal Homepage: <http://pop.aip.org/>

Journal Information: http://pop.aip.org/about/about_the_journal

Top downloads: http://pop.aip.org/features/most_downloaded

Information for Authors: <http://pop.aip.org/authors>

ADVERTISEMENT

An advertisement banner for AIP Advances. The top part features the 'AIP Advances' logo, which includes the text 'AIP Advances' in a green font and a series of orange and yellow circles of varying sizes arranged in an arc. Below the logo is a dark blue horizontal bar with the text 'Special Topic Section: PHYSICS OF CANCER' in white. At the bottom of the banner, the text 'Why cancer? Why physics?' is written in a light green font, followed by a blue button with the text 'View Articles Now' in white. The background of the banner is a green and white abstract pattern of curved lines.

AIP Advances

Special Topic Section:
PHYSICS OF CANCER

Why cancer? Why physics? [View Articles Now](#)

Magnetic reconnection in a weakly ionized plasma

James E. Leake,^{1,a)} Vyacheslav S. Lukin,² and Mark G. Linton²

¹College of Science, George Mason University, 4400 University Drive, Fairfax, Virginia 22030, USA

²U.S. Naval Research Lab, 4555 Overlook Ave., SW Washington, DC 20375

(Received 4 February 2013; accepted 20 February 2013; published online 13 June 2013)

Magnetic reconnection in partially ionized plasmas is a ubiquitous phenomenon spanning the range from laboratory to intergalactic scales, yet it remains poorly understood and relatively little studied. Here, we present results from a self-consistent multi-fluid simulation of magnetic reconnection in a weakly ionized reacting plasma with a particular focus on the parameter regime of the solar chromosphere. The numerical model includes collisional transport, interaction and reactions between the species, and optically thin radiative losses. This model improves upon our previous work in Leake *et al.* [“Multi-fluid simulations of chromospheric magnetic reconnection in a weakly ionized reacting plasma,” *Astrophys. J.* **760**, 109 (2012)] by considering realistic chromospheric transport coefficients, and by solving a generalized Ohm’s law that accounts for finite ion-inertia and electron-neutral drag. We find that during the two dimensional reconnection of a Harris current sheet with an initial width larger than the neutral-ion collisional coupling scale, the current sheet thins until its width becomes less than this coupling scale, and the neutral and ion fluids decouple upstream from the reconnection site. During this process of decoupling, we observe reconnection faster than the single-fluid Sweet-Parker prediction, with recombination and plasma outflow both playing a role in determining the reconnection rate. As the current sheet thins further and elongates, it becomes unstable to the secondary tearing instability, and plasmoids are seen. The reconnection rate, outflows, and plasmoids observed in this simulation provide evidence that magnetic reconnection in the chromosphere could be responsible for jet-like transient phenomena such as spicules and chromospheric jets. © 2013 AIP Publishing LLC. [<http://dx.doi.org/10.1063/1.4811140>]

I. INTRODUCTION

Magnetic reconnection, the process which converts energy stored in the magnetic field into kinetic and thermal energy of the plasma by breaking magnetic connectivity, is observed in a range of laboratory and astrophysical plasmas. In the astrophysical context, these include the interstellar medium (ISM), galactic disks, and the heliosphere.² In the heliosphere in particular, magnetic reconnection is believed to be the cause of transient phenomena such as solar flares and X-ray jets,³ magnetospheric substorms,^{4,5} and solar γ -ray bursts.^{6,7}

Reconnection occurs when the ideal magnetohydrodynamic (MHD) frozen-in constraint, valid for highly conducting plasmas, is broken locally, by allowing fieldlines to reconnect through a narrow diffusion region. Parker⁸ and Sweet⁹ were the first to formulate magnetic reconnection as a local process within the single-fluid, fully ionized, MHD framework. They considered a current layer of width δ_{SP} much smaller than its length L , and plasma with non-zero resistivity (η) due to electron-ion collisions. The model assumes steady state, i.e., the rate of supply of ions to the reconnection region by inflow is equal to the rate of removal of ions by outflow, and takes the length L to be the characteristic system length scale. Using Ohm’s law for a fully ionized, single fluid plasma with velocity \mathbf{v} , magnetic field \mathbf{B} , electric field \mathbf{E} , and current density \mathbf{j}

$$\mathbf{E} + \mathbf{v} \times \mathbf{B} = \eta \mathbf{j}, \quad (1)$$

along with the plasma momentum equation and the steady state continuity equation, a simple equation for the reconnection rate can be derived

$$M \equiv \frac{v_{in}}{v_A} \approx \sqrt{\frac{\eta}{\mu_0 v_A L}} = \frac{1}{\sqrt{S}}. \quad (2)$$

Here $S = \mu_0 v_A L / \eta$ is the Lundquist number, v_{in} is the ion inflow upstream from the current sheet, $v_A = B / \sqrt{\rho \mu_0}$ is a typical Alfvén velocity, with B evaluated upstream from the current sheet and ρ (mass density) evaluated in the current sheet. The permeability of free space is denoted by μ_0 . From this analysis, it can also be shown that the Sweet-Parker current width δ_{SP} and aspect ratio $\sigma_{SP} \equiv \delta_{SP} / L$ approximate to

$$\delta_{SP} \approx \sqrt{\frac{\eta L}{\mu_0 v_A}}, \quad \sigma_{SP} \approx \frac{1}{\sqrt{S}}. \quad (3)$$

In this paper, we will focus on magnetic reconnection in the solar chromosphere, which exhibits localized, transient outflows on a number of different length-scales. “Chromospheric jets” are the largest class of these outflows and are surges of plasma with typical lifetimes of 200–1000 s, lengths of 5 Mm, and velocities at their base of 10 km/s (e.g., see Refs. 10–12). “Spicules” are a smaller class of chromospheric outflows and have lifetimes of 10–600 s, lengths of up to 1 mm, and velocities of 20–150 km/s (e.g., see Ref. 13). A unified model for the generation of chromospheric outflows

^{a)}Electronic mail: jleake@gmu.edu

was suggested by Refs. 3 and 10. In their model, a bipolar field emerging into and reconnecting with a unipolar field creates outwardly directed reconnection jets. Depending on the size of the bipole and the strength of the field, this model may be able to explain some of the observed properties of spicules and chromospheric jets. In Leake *et al.*¹ we argued that, given the observed lifetimes, lengths and velocities of chromospheric jets, the minimum normalized reconnection rate is $M \approx 0.5$. For spicules, the minimum value we derived is $M \approx 0.01$.

The solar chromosphere is a weakly ionized plasma, where the average collision time between neutrals and ions is on the order of ms, and so these two fluids can generally be considered to act as a single fluid. In this regime, the Sweet-Parker reconnection scaling is applicable, though the Alfvén speed, v_A , now depends on the total (ion+neutral) mass. However, if the width of the current sheet is comparable to the neutral-ion collisional mean free path, $\lambda_{ni} \equiv v_{T,n}/\nu_{ni}$ (where $v_{T,n}$ is the thermal velocity of neutrals and ν_{ni} is the neutral-ion collisional frequency), ions and neutrals can decouple and the mix may not be in ionization balance. In this case, the reconnection region will have sources and sinks of ions in the form of the atomic reactions of ionization and recombination, and the inflow and outflow rates for the reconnection region could be affected by these interactions.

The model for the multi-fluid simulations we presented in Leake *et al.*¹ included ionization, recombination, and scattering collisions, but did not include charge exchange collisions. We found fast reconnection occurred when the ions and neutrals became decoupled upstream from the reconnection site, and the resulting recombination of excess ions within the current sheet was as efficient at removing ions as the expulsion by reconnecting field. In this paper, we improve upon that model in a number of ways. First, we include charge exchange collisions and use more realistic cross-sections for scattering collisions, which effectively increases the collisional coupling of neutrals and ions, and thus decreases the neutral-ion collisional mean free path. At the same time, we also have a higher Lundquist number (see below) than in Leake *et al.*¹ which reduces the Sweet-Parker width. As we will show, these changes result in similar ratios of the Sweet-Parker width to the neutral-ion collisional scale. We suggest that it is this ratio that is important for obtaining fast reconnection, and so the simulation in this paper and those in Leake *et al.*¹ are consistent despite these changes. Second, we allow the neutral fluid collisional transport coefficients to be functions of the local plasma conditions, rather than model parameters, and use more realistic values for the fluid transport coefficients. This results in a magnetic Prandtl number, the ratio of viscous to resistive diffusivity, which is lower than the simulations of Leake *et al.*¹

Third, we solve a generalized Ohm's law that accounts for finite ion inertia and electron-neutral drag effects. In the simulations of Leake *et al.*¹ the resistivity was a parameter of the simulations, and we derived scaling relationships for the reconnection rate and current sheet width in terms of the resistivity (or Lundquist number). The resistivity used in this paper, which appropriately depends on the plasma density and temperature, is a more realistic estimate for the

chromospheric resistivity, and hence Lundquist number. The numerical model used in this paper is presented in Sec. II, and the results are presented in Sec. III. Section IV provides discussion of the results in reference to the transient phenomena observed in the chromosphere such as spicules and jets.

II. NUMERICAL METHOD

A. Multi-fluid partially ionized plasma model

The chromospheric model is based on the model used in our previous simulations in Leake *et al.*¹ and so we only present here the modifications made to that model, and the necessary information to understand the modifications. The model consists of three fluids, ion (*i*), electron (*e*), and neutral (*n*). Each fluid (α) has a number density n_α , particle mass m_α , pressure tensor \mathbb{P}_α , velocity \mathbf{v}_α , and temperature T_α . Only hydrogen is considered here, and so m_i and m_n are equal to the mass of a proton. These fluids can undergo recombination, ionization, and charge exchange interactions. The recombination and ionization reaction rates are given by Eqs. (4)–(7) in Leake *et al.*¹ As mentioned in Leake *et al.*¹ we did not include charge exchange interactions, but do so in the simulation presented in this paper.

The charge exchange reaction rate Γ^{cx} is defined as

$$\Gamma^{cx} \equiv \Sigma_{cx}(V_{cx})n_i n_n V_{cx}, \quad (4)$$

where

$$V_{cx} \equiv \sqrt{\frac{4}{\pi}v_{Ti}^2 + \frac{4}{\pi}v_{Tn}^2 + v_{in}^2} \quad (5)$$

is the representative speed of the interaction and $v_{in}^2 \equiv |\mathbf{v}_i - \mathbf{v}_n|^2$. The thermal speed of species α is given by $v_{T\alpha} = \sqrt{2k_B T_\alpha / m_\alpha}$, where k_B is Boltzmann's constant. Following Ref. 14, the charge exchange cross-section $\Sigma_{cx}(V_{cx})$ is given by

$$\Sigma_{cx}(V_{cx}) = 1.12 \times 10^{-18} - 7.15 \times 10^{-20} \ln V_{cx} \text{ m}^2, \quad (6)$$

which is a practical fit to observational data of Hydrogen collisions.¹⁵ The units of V_{cx} in this expression are in m/s.

1. Continuity

The continuity equations for the ions and neutrals are given by Eqs. (10) and (11) in Leake *et al.*¹ respectively, and include ionization and radiative recombination. The electron continuity equation is not required as charge neutrality ($n_e = n_i$) is assumed.

2. Momentum

The ionized fluid (electron+ion), and neutral fluid momentum equations are given by Eqs. (12) and (13) in Leake *et al.*¹ respectively, and include ionization, recombination, and charge exchange contributions. As in Leake *et al.*¹ we neglect the viscous part of the electron pressure tensor, but in this paper, the contributions due to charge exchange are retained.

In addition, we use different collisional cross-sections for ions and neutrals, compared to the model in Leake *et al.*¹

The collision frequency for collisions of ions with neutrals is ν_{in} is given by

$$\nu_{in} = n_n \Sigma_{in} \sqrt{\frac{8k_B T_{in}}{\pi m_{in}}}, \quad (7)$$

with $T_{\alpha\beta} = \frac{T_\alpha + T_\beta}{2}$ and $m_{\alpha\beta} = \frac{m_\alpha m_\beta}{m_\alpha + m_\beta}$. The ion neutral collisional cross-section is Σ_{in} . In this paper, we use $\Sigma_{in} = \Sigma_{ni} = 1.16 \times 10^{-18} \text{ m}^2$, whereas in Leake *et al.*,¹ the model used $\Sigma_{in} = \Sigma_{ni} = 1.4 \times 10^{-19} \text{ m}^2$. These improvements are made to take into account the theoretical work of Ref. 16.

In the model in this paper, we also use plasma dependent viscosity coefficients in the pressure tensor, unlike in Leake *et al.*¹ where they were merely parameters (the neutral viscosity coefficient ξ_n was set to $10^{-3} \text{ kg m}^{-1} \text{ s}^{-1}$, as was the ion viscosity coefficient). In this paper, the neutral and ion viscosity coefficients are given by

$$\xi_n = \frac{n_n k_B T_n}{\nu_{nn}}, \quad \text{and} \quad \xi_i = \frac{n_{i,0} k_B T_{i,0}}{\nu_{ii0}}, \quad (8)$$

respectively. The relevant collision frequencies ν_{nn} and ν_{ii} are given by

$$\nu_{nn} = n_n \Sigma_{nn} \sqrt{\frac{16k_B T_n}{\pi m_n}}, \quad \text{and} \quad \nu_{ii} = \frac{4}{3} n_i \Sigma_{ii} \sqrt{\frac{2k_B T_i}{\pi m_i}}, \quad (9)$$

where $\Sigma_{nn} = 7.73 \times 10^{-19} \text{ m}^2$, and $\Sigma_{ii} = \lambda \pi r_{d,i}^2$, with $r_{d,i} = e^2 / (4\pi \epsilon_0 k_B T_i)$ being the distance of closest approach for ions (ϵ_0 is the permittivity of free space, e is the elementary charge, and $\lambda = 10$ is the Coulomb logarithm). The subscripts 0 in the ion coefficient represent background values at time $t=0$. Hence, the neutral viscosity coefficient varies, but the ion viscosity coefficient has a constant value equivalent to unmagnetized ion viscosity in a uniform background plasma of temperature $T_{i,0}$ and density $n_{i,0}$. Future work will consider the effects of an anisotropic ion stress tensor.

3. Internal energy

The internal energy equations for the ionized fluid (ion-electron) and the neutral fluid are given by Eqs. (19) and (20) in Leake *et al.*,¹ respectively, and include ionization, recombination, charge exchange, and optically thin radiative losses. In this paper, we retain the charge-exchange interaction contributions. We also use a neutral thermal conductivity (κ_n) that is dependent on the plasma parameters

$$\kappa_n = \frac{4n_n k_B T_n}{\nu_{nn} m_i}. \quad (10)$$

This has a value of $\kappa_n = 1.76 \times 10^{24} \text{ m}^{-1} \text{ s}^{-1}$ for the initial background neutral density and temperature used in the simulation in this paper. In Leake *et al.*,¹ we used a constant value, independent of the neutral fluid conditions, of $\kappa_n = 1.58 \times 10^{24} \text{ m}^{-1} \text{ s}^{-1}$. Note that the frictional heating and thermal transfer term $Q_\alpha^{z\beta}$ was quoted incorrectly in Leake *et al.*¹ and is instead given by $Q_\alpha^{z\beta} = \frac{1}{2} \mathbf{R}_\alpha^{z\beta} \cdot (\mathbf{v}_\beta - \mathbf{v}_\alpha) + 3 \frac{m_{z\beta}}{m_\alpha} n_\alpha \nu_{\alpha\beta} k_B (T_\beta - T_\alpha)$. $\mathbf{R}_\alpha^{z\beta}$ is the momentum transfer to species α due to collisions with scattering species β (see Ref. 1).

4. Ohm's law

The generalized Ohm's law used in this paper which negelects the viscous part of the electron pressure tensor but includes electron-neutral collisions as well as electron-ion collisions

$$\mathbf{E} + (\mathbf{v}_i \times \mathbf{B}) = \eta \mathbf{j} + \frac{\mathbf{j} \times \mathbf{B}}{en_i} - \frac{1}{en_i} \nabla P_e - \frac{m_e \nu_{en}}{e} \mathbf{w}, \quad (11)$$

where $\mathbf{w} = \mathbf{v}_i - \mathbf{v}_n$. The resistivity η is calculated using the electron-ion and electron-neutral collisional frequencies, and thus depends on the plasma conditions

$$\eta = \frac{m_e n_e (\nu_{ei} + \nu_{en})}{(en_e)^2}, \quad (12)$$

where the electron-ion (ν_{ei}) and electron-neutral (ν_{en}) collision frequencies are given by

$$\nu_{ei} = \frac{4}{3} n_i \Sigma_{ei} \sqrt{\frac{2k_B T_e}{\pi m_e}}, \quad \text{and} \quad \nu_{en} = n_n \Sigma_{en} \sqrt{\frac{8k_B T_{en}}{\pi m_{en}}}. \quad (13)$$

The electron-ion collisional cross-section $\Sigma_{ei} = \lambda \pi r_{d,e}^2$, where $r_{d,e} = e^2 / (4\pi \epsilon_0 k_B T_e)$ is the distance of closest approach for electrons. The electron-neutral collisional cross-section is $\Sigma_{en} = \Sigma_{ne} = 1 \times 10^{-19} \text{ m}^2$. The model used in Leake *et al.*¹ neglected all but the first term on the right hand side of the generalized Ohm's law, Eq. (11), and used a parameter for the resistivity η , rather than calculating it using Eq. (12).

5. Summary

The changes made to the model presented in Leake *et al.*,¹ which have been implemented to make the physical model more realistic, have a number of consequences. In the model in this paper, we include charge exchange interactions, which, for the chromospheric plasma parameters, effectively double the collisional coupling between ions and neutrals. Also, the ion-neutral scattering cross-section is larger here than in Leake *et al.*,¹ as we use a more realistic value, based on the theoretical work of Ref. 16. These two changes increase the neutral-ion collisional coupling, which reduces the neutral-ion mean free path by approximately an order of magnitude. As we will show in the following section, the Sweet-Parker width in this simulation is also smaller. As a result the ratio of Sweet-Parker width to neutral-ion collisional mean free path in the simulation in this paper is similar to that in Leake *et al.*¹

In addition to the above changes, in the model used in this paper, we evolve the system with a generalized Ohm's law where the resistivity is not a parameter of the simulations, but appropriately depends on the electron collision frequencies (ν_{ei}, ν_{en}) and hence depends on the local plasma parameters. This is more realistic than performing a parameter study over resistivity as was done in Leake *et al.*,¹ and helps to confirm that the results found in that paper are valid for realistic chromospheric parameters. In addition to these differences, the simulations in this paper have a magnetic Prandtl number lower than the simulations of Leake *et al.*,¹

as we are using a different resistivity and more realistic ion and neutral transport coefficients. This will be discussed in more detail in the next section.

It is also worth noting how the model presented here differs from partially ionized single-fluid models such as those used in Refs. 17–20. The single-fluid approach implicitly assumes that the ions and neutrals are in ionization balance, which is determined by the average density and temperature, and the center of mass velocity used in the Ohm's law is an average over ions and neutrals. *Ambipolar diffusion*, present in these single-fluid models, is a consequence of this center of mass velocity. Ambipolar diffusion has been shown to cause the thinning of current sheets with no guide field.^{19,20} The multi-fluid model presented here, however, follows the evolution of the ions and neutrals separately. This will be shown to be vital for the onset of fast reconnection in chromospheric plasmas.

B. Normalization

The equations are non-dimensionalized by dividing each variable (C) by its normalizing value (C_0). The set of equations requires a choice of three normalizing values. Normalizing values for the length ($L_0 = 1 \times 10^4$ m), number density ($n_0 = 3 \times 10^{16}$ m⁻³), and magnetic field ($B_0 = 2 \times 10^{-3}$ T) are chosen. From these values, the normalizing values for the velocity ($v_0 = B_0 / \sqrt{\mu_0 m_i n_0} = 2.52 \times 10^5$ m.s⁻¹), time ($t_0 = L_0 / v_0 = 0.04$ s), temperature ($T_0 = B_0^2 / k_B \mu_0 n_0 = 7.69 \times 10^6$ K), pressure ($P_0 = B_0^2 / \mu_0 = 3.18$ Pa), current density ($j_0 = B_0 / (\mu_0 L_0) = 0.6$ A.m²), and resistivity ($\eta_0 = \mu_0 L_0 v_0 = 3.17 \times 10^3$ Ωm) can be derived.

C. Initial conditions

The simulation domain extends from $-16L_0$ to $16L_0$ in the x direction and $-4L_0$ to $+4L_0$ in the y direction, with a periodic boundary condition in the x -direction and perfectly conducting boundary conditions in the y -direction. The horizontal extent is chosen to be larger than the maximum horizontal extent of the current sheet length during the simulation (which is approximately $6L_0$).

The initial neutral fluid number density is $200n_0$ (6×10^{18} m⁻³), and the ion fluid number density is $0.2n_0$ (0.6×10^{16} m⁻³). This gives a total (ion+neutral) mass density of 1.0×10^{-8} kg · m⁻³, and an initial ionization level ($\psi_i \equiv n_i / (n_i + n_n)$) of 0.1%. The initial electron, ion and neutral temperatures are set to $1.1 \times 10^{-3} T_0$ (8.46×10^3 K). These initial conditions are consistent with lower to middle chromospheric conditions, based on 1D semi-empirical models of the quiet Sun.²¹ For these plasma parameters, the isotropic neutral heat conduction is much faster than any of the anisotropic heat conduction tensor components for either ions or electrons. This fact, coupled with the fact that the ion-neutral collision time is small compared with a typical dynamical time, means that thermal diffusion of the plasma is dominated by neutral heat conduction and is primarily isotropic.

As in Leake *et al.*,¹ the initial magnetic configuration is a Harris current sheet

$$A_z = -\frac{B_0}{2} \lambda_{\psi} \ln \cosh(y/\lambda_{\psi}), \quad \mathbf{B} = \nabla \wedge A_z \hat{\mathbf{e}}_z, \quad (14)$$

with an initial width of $\lambda_{\psi} = 0.5L_0$. Both the ionized pressure $P_p = P_i + P_e$ and the neutral pressure P_n are increased in the current sheet in order to balance the Lorentz force of the magnetic field in the current sheet

$$P_p(y) = P_p + \frac{1}{2} \frac{F}{\cosh^2(y/\lambda_{\psi})}, \quad (15)$$

$$P_n(y) = P_n + \frac{1}{2} \frac{P_0 - F}{\cosh^2(y/\lambda_{\psi})}, \quad (16)$$

where $F = 2 \times 10^{-3} P_0$ is chosen to maintain an approximate ionization balance of 0.1% inside the current sheet.

A relative velocity between ions and neutrals is therefore required so that the collisional terms (both scattering collisions and charge exchange) can couple the ionized and neutral fluids and keep the fluids individually in approximate force balance. For simplicity, using the fact that the ion-neutral drag due to charge exchange and scattering collisions are approximately equal, we assume the following form for the initial ion velocity:

$$v_{iy}(y) = \frac{(F-1) \tanh(y/\lambda_{\psi})}{n_i n_n \nu_{in} \lambda_{\psi} \cosh^2(y/\lambda_{\psi})} \frac{n_0^2 v_0^2}{P_0}. \quad (17)$$

While this is not an exact steady state, the velocities that arise from the unbalanced forces in the initial condition are very small compared with the flows created by the onset of the reconnection process.

To initiate the onset of the tearing mode instability, an additional, localized, small amplitude rotational flow perturbation is applied to the neutral and ion fluids, with the form

$$v_{\alpha,y} = -\frac{v_{\delta}^0}{5} \sin\left(\frac{y}{\lambda_{\psi}}\right) \left[\cos\left(\frac{x}{5\lambda_{\psi}}\right) - 2\frac{x}{5\lambda_{\psi}} \sin\left(\frac{x}{5\lambda_{\psi}}\right) \right] e^{-r^2}, \quad (18)$$

$$v_{\alpha,x} = v_{\delta}^0 \sin\left(\frac{x}{5\lambda_{\psi}}\right) \left[\cos\left(\frac{y}{\lambda_{\psi}}\right) - 2\frac{y}{\lambda_{\psi}} \sin\left(\frac{y}{\lambda_{\psi}}\right) \right] e^{-r^2}, \quad (19)$$

where $v_{\delta}^0 = 5 \times 10^{-4} v_0$ and $r = \frac{(x)^2 + (y)^2}{\lambda_{\psi}^2}$.

For these initial conditions, the background neutral-ion collisional mean free path, $\lambda_{ni} = v_{T,n} / \nu_{ni}$ is 90 m. The initial current sheet width is $0.5L_0 = 5$ km, and so is much larger than λ_{ni} . Therefore, we expect that the initial reconnection will behave like the classical single-fluid (i.e., when the neutrals and ions are coupled) Sweet-Parker model, and the initial current sheet will thin until it reaches the Sweet-Parker width, δ_{SP} . To estimate this Sweet-Parker width, we use the equation $\delta_{SP} \approx \sqrt{\eta L / \mu_0 v_A}$, the initial resistivity η , background field strength and total number density (to get an estimate for v_A), and estimate that the reconnection region length L is equal to the spatial extent of the tearing perturbation ($L = 5\lambda_{\psi} = 2.5 \times 10^4$ m). This gives an estimate of $\delta_{SP} \approx 120$ m, which is comparable to the background neutral-ion collisional mean free path, 90 m. If the current

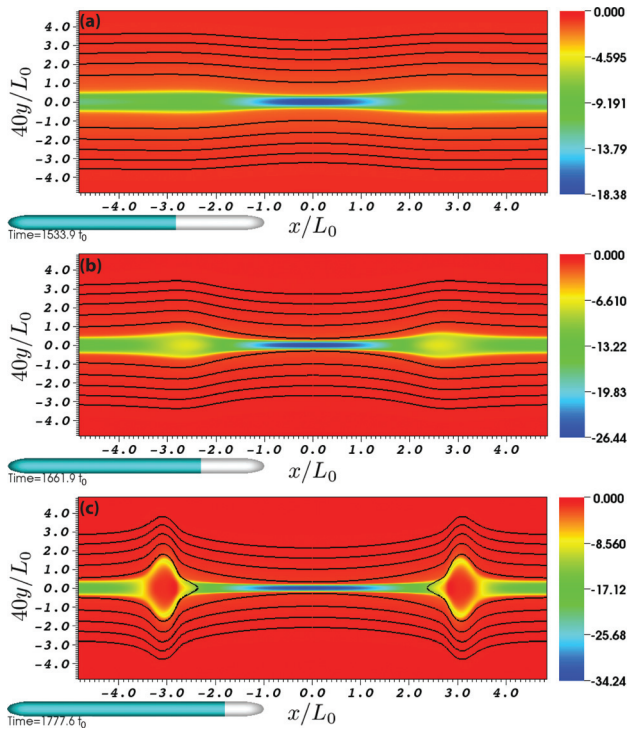


FIG. 1. Formation of reconnection region. Current density (j_z/j_0) is shown by color scale, and 5 contour values of A_z , $[-0.02, -0.0175, -0.015, -0.0125, -0.01]B_0L_0$, show representative fieldlines. Note that the y -coordinate is expanded by a factor of 40.

sheet thins until its width is comparable to the δ_{SP} , its width will also be comparable to λ_{ni} , and so the neutrals will begin to decouple from the ions. The decoupling will result in the neutral pressure being unable to balance magnetic pressure and the sheet will thin further. Thus, the current sheet width may decrease beyond the Sweet-Parker width, and eventually may become less than the mean free path. This scenario occurred in the simulations of Leake *et al.*,¹ although the physical model and initial parameters were different from the simulation in this paper. In Leake *et al.*,¹ the background

neutral-ion collisional mean free path was 1350 m, and the Sweet-Parker width had a range of 1330 m to 8410 m (as the resistivity η was varied as a parameter of the simulations). The current sheets in those simulations thinned to less than 1000 m, i.e., narrower than the mean free path.

III. RESULTS

Figure 1 shows the early evolution of the reconnection region resulting from the initial perturbation, on a subset of the simulation domain. The color indicates current density, and the solid lines show isocontours of A_z , i.e., magnetic fieldlines. The y axis is stretched by a factor of 40 to show the thin structures formed. The tearing instability grows, magnetic field reconnects at the X-point, and flux is ejected. A Sweet-Parker-like reconnection region is formed, where ions are pulled in by the magnetic field and drag the neutrals with them.

The current sheet width and length as functions of time are shown in Figure 2. The width, δ_{sim} , is defined to be the half-width at half-max of the current sheet. The length, L_{sim} , is defined as the x location along the line $y=0$ at which the horizontal velocity of the ions reaches a maximum (i.e., the location of maximum outflow). These two definitions are the same as was used in Leake *et al.*¹ As can be seen in Figure 2, the current sheet width falls from a value of $0.037L_0 = 370$ m at time $t = 800t_0$ to a value of $3.3 \times 10^{-3}L_0 = 33$ m by the end of the simulation. This final width is less than the neutral-ion collisional mean free path at this time (95 m). Thus, during the simulation, the current sheet has undergone a transition from being thicker than the mean free path to being thinner than it, as predicted. The current sheet also lengthens after $t = 1500t_0$, increasing to $2.9L_0$. The aspect ratio (δ_{sim}/L_{sim}) at $t = 1800t_0$ is 1.1×10^{-3} .

Figure 3 shows profiles across the current sheet at $x=0$ of the ion density, current density, vertical ion flow, and the difference between the vertical neutral flow and the vertical ion flow, at three different times in the simulation ($1408.9t_0$,

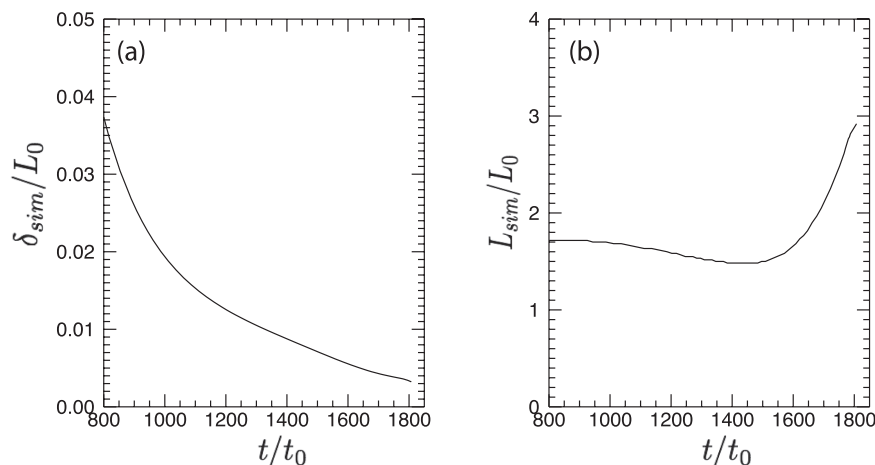


FIG. 2. Width and length of the current sheet as a function of time. The width is defined by the half-width half-maximum based on the current density j_z . The length is defined as the distance from $x=0$ to the x location of maximum ion outflow v_{ix} on the $y=0$ line. The current sheet width monotonically decreases during the simulation after $t = 800$ s, and eventually becomes less than the background neutral-ion collisional mean free path λ_{ni} , which is $0.0095L_0 = 95$ m at the end of the simulation. Before 800 s, the tearing instability has not developed enough to give a uniquely defined current sheet width and length. As the non-linear reconnection continues, the current sheet is seen to elongate after $t = 1500$ s.

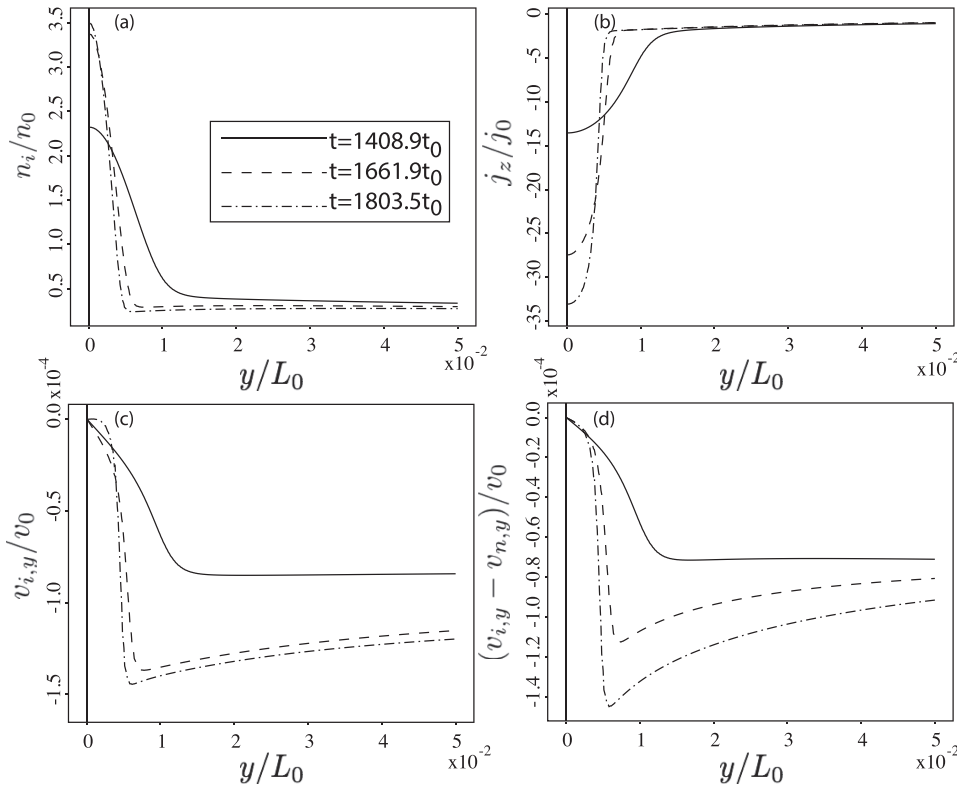


FIG. 3. Profiles across the current sheet ($x=0$). Panel (a) shows the ion density (n_i/n_0), panel (b) shows the current density (j_z/j_0), panel (c) shows the ion inflow ($v_{i,y}/v_0$), and panel (d) shows the difference in neutral and ion inflow ($(v_{i,y} - v_{n,y})/v_0$). This figure demonstrates the sharpening in the current density and ion density as the current sheet collapses. It also indicates that the peak in $|v_{n,y}|$ is approximately 0.1 times the peak in $|v_{i,y}|$, i.e., the inflow is decoupled.

1661.9 t_0 , and 1803.5 t_0). As the tearing instability develops, panels (a) and (b) show the ion density and current density building into a sharp structure with the same gradient scale. Note that at $y=0$, the ionized fraction ($n_i/(n_i + n_n)$) rises by an order of magnitude from 0.1% at $t=0$ to 1.2% at the end of the simulation ($t=1807t_0$), though the plasma remains weakly ionized throughout the domain. Panels (c) and (d)

show an increase in the ion inflow and an increase in the difference between neutral and ion inflows as the current layer develops. The amplitude of the ion inflow reaches a maximum of $1.5 \times 10^{-4}v_0$, while the neutral inflow is much slower than the ion inflow. The peak difference between neutral and ion inflows at $t=1803.5$ s is $1.4 \times 10^{-4}v_0$, which means that the peak neutral inflow is $1 \times 10^{-5}v_0$, less than a

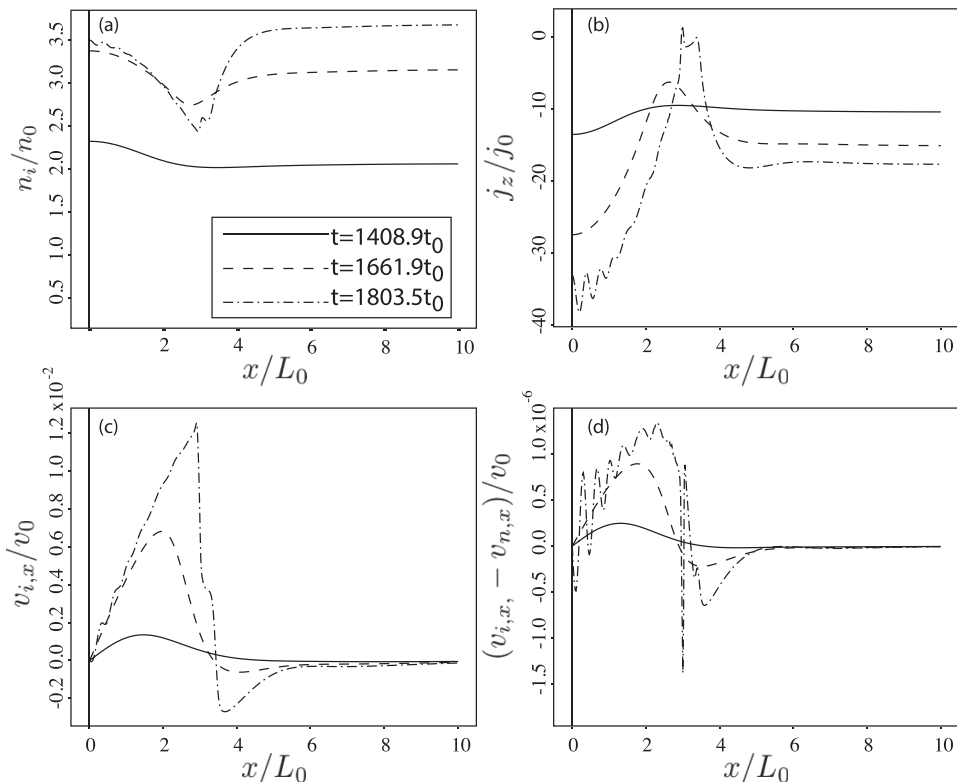


FIG. 4. Profiles along the current sheet ($y=0$). Panel (a) shows the ion density (n_i/n_0), panel (b) shows the current density (j_z/j_0). Panel (c) shows the ion outflow ($v_{i,x}/v_0$). Panel (d) shows the difference in neutral and ion outflow ($(v_{i,x} - v_{n,x})/v_0$). The difference in ion and neutral outflow is small compared to the ion outflow, and so the neutrals and ions fluids are coupled. The x location of the peak in the ion outflow can be seen to move outward in time (panel (c)).

tenth of the peak ion inflow. Clearly the neutrals have become decoupled from the ions, and are being pulled into the reconnection region much slower than the ions.

Figure 4 shows profiles of the ion density, current density, ion outflow, and the difference between the neutral and ion outflows, within the current sheet, along the line $y=0$ at three different times. The wave-like oscillations seen in the current density profile between $x=0$ and $x=L_0$ in panel (b) are caused by the onset of the secondary tearing instability, which will be discussed later in this section. Also note the increase in ion density and moderate increase in current density magnitude outside the reconnection region, $x \gtrsim 3.5L_0$, at later times. This behavior is characteristic of the 1D magnetic field reconnection in a weakly ionized plasma considered by Refs. 22 and 23. As discussed in the above referenced studies, such a recombination facilitated process can lead to resistivity independent reconnection for a limited range of plasma parameters. However, as will be shown here and as was shown by Leake *et al.*,¹ by allowing for plasma outflow in a 2D configuration and with given plasma conditions, the reconnection rate can be accelerated beyond the 1D result.

Figure 4, panels (c) and (d), shows that the neutral and ion outflow are very well coupled with the difference between neutral and ion outflow being approximately 4 orders of magnitude smaller than the ion outflow. To highlight the fact that the neutral inflow is decoupled from the ion inflow, but that the outflows are coupled, Figure 5(a) shows a subset of the simulation domain at $t = 1661.9t_0$. The solid lines show isocontours of A_z . The top left quadrant shows the ion inflow velocity, and the top right quadrant shows the neutral inflow velocity. At this time, the current

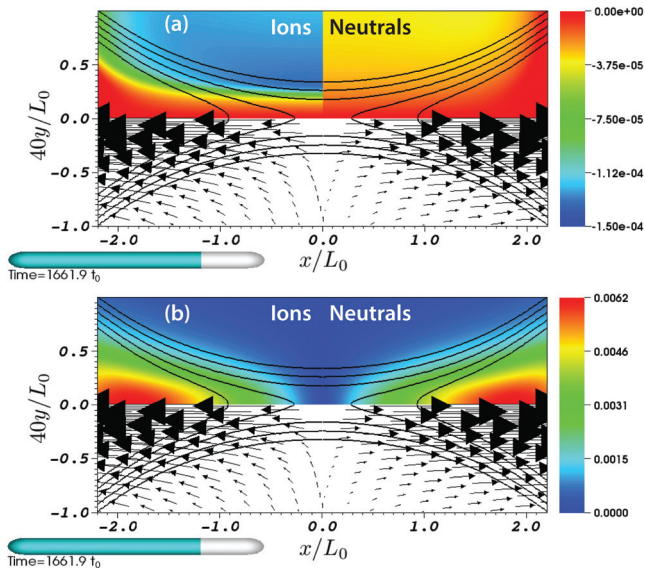


FIG. 5. Illustration of the decoupling of ion and neutral inflow during reconnection. At $t = 1661.9t_0$, the current sheet width δ_{sim} is less than the background neutral-ion collisional mean free path λ_{ni} . Panel (a): The ion (top left quadrant) and neutral (top right quadrant) inflows ($v_{i,y}/v_0$ and $v_{n,y}/v_0$). The solid lines show 5 contour values of A_z , $[-0.01, -0.00975, -0.0095, -0.00925, -0.009]B_0L_0$. The vectors show ion flow on the bottom left quadrant and neutral flow on the bottom right quadrant. Panel (b): The ion and neutral outflows ($v_{i,x}/v_0$ and $v_{n,x}/v_0$): The contour lines and vectors are the same as in the top panel.

sheet width $\delta_{sim} = 0.0045L_0 = 45$ m, which is smaller than the neutral-ion collisional mean free path $\lambda_{ni} = 0.0095L_0 = 95$ m. The ions have a larger maximum amplitude of inflow than the neutrals, which is a direct consequence of the fact that the current sheet is now narrower than the neutral-ion collisional mean free path and the neutrals are not dragged into the current sheet as quickly as the ions. Figure 5(b) shows the outflow velocities. The outflows are well coupled in the sense that the difference between ion and neutral outflow is negligible compared to the magnitude of the ion outflow. This situation, where the inflow is decoupled but the outflow is coupled, was also observed in the earlier simulations by Leake *et al.*,¹ and is a consequence of the neutral-ion mean free path lying between the inflow and outflow scales of the current sheet, $\delta_{sim} < \lambda_{ni} < L_{sim}$.

The maximum outflow speed during the simulation is $0.0126v_0 = 3$ km/s which, although small compared to typically measured spicule flows (up to 150 km/s), is close to the flows observed in chromospheric jets (~ 10 km/s). The Alfvén speed just upstream of the reconnection current sheet is $0.006v_0$, and so the outflow can be up to twice the local upstream Alfvén speed. As the Alfvén speed scales with magnetic field strength and density, it is possible that larger outflows can be obtained by using either larger fields ($B_0 = 20$ G here), corresponding to more active regions of the Sun, or by using lower number densities, corresponding to conditions in the upper chromosphere.

Figure 6 displays contributing terms to the y component of the total momentum equation at time $t = 1661.9t_0$. The top left quadrant shows the vertical gradient of the ionized (ion + electron) pressure, and the top right quadrant shows the vertical gradient in the neutral pressure. The bottom half shows the y component of the Lorentz force. The color scale highlights that on the scale of λ_{ni} , it is the ionized pressure that balances the Lorentz force (in the y direction), and on scales larger than λ_{ni} it is the neutral pressure that balances the Lorentz force.

The separation of inflow velocities has consequences for the reconnection occurring in the current sheet. If ions are pulled in faster than neutrals, with equal outflows, then there will be an excess of ions above the ionization equilibrium, and recombination will occur. In Leake *et al.*¹ we found that recombination was as efficient at removing ions from the

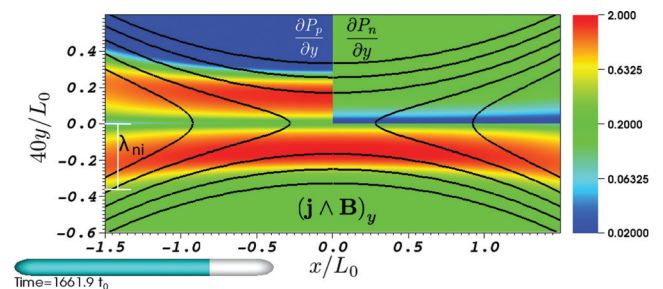


FIG. 6. Contributions to the plasma and neutral momentum equations. The top left quadrant shows $\frac{\partial P_p}{\partial y}$, where $P_p = (P_i + P_e)$, and the top right quadrant shows $\frac{\partial P_n}{\partial y}$. The bottom half shows $(\mathbf{j} \wedge \mathbf{B})_y$. The color is on a log-scale. This shows that $\frac{\partial P_p}{\partial y}$ balances $(\mathbf{j} \wedge \mathbf{B})_y$ on the collisional scale λ_{ni} , while $\frac{\partial P_n}{\partial y}$ balances $(\mathbf{j} \wedge \mathbf{B})_y$ on scales greater than λ_{ni} . The solid lines are 5 contour values of A_z , $[-0.01, -0.00975, -0.0095, -0.00925, -0.009]B_0L_0$.

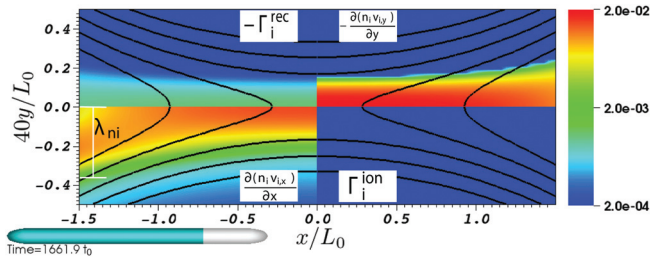


FIG. 7. The steady state reconnection region showing contributing sources and sinks of ions in the current sheet (in units of $L_0^{-3} t_0^{-1}$): Top left quadrant shows rate of loss of ions due to recombination. Bottom left quadrant shows rate of loss of ions due to outflow $\frac{\partial n_i v_{ix}}{\partial x}$. Top right quadrant shows rate of gain of ions due to inflow $-\frac{\partial(n_i v_{iy})}{\partial y}$. Bottom right quadrant shows rate of gain of ions due to ionization. The solid lines are 5 contour values of A_z , $[-0.01, -0.00975, -0.0095, -0.00925, -0.009]B_0 L_0$. This shows that ionization is negligible, and that outflow is larger than recombination.

reconnection region as the outflow caused by reconnecting field. Figure 7 shows the four components contributing to $\frac{\partial n_i}{\partial t}$ in the ion continuity equation for the simulation described here. The top left quadrant shows the loss due to recombination, the bottom left quadrant shows the loss due to outflow (horizontal gradient in horizontal momentum of ions), the top right quadrant shows the gain due to inflow (vertical gradient in vertical momentum), and the bottom right quadrant

shows the gain due to ionization. Unlike in Leake *et al.*,¹ here we observe that, within the reconnection region, outflow is larger than recombination, with a negligible contribution from ionization. An important distinction between the simulation in this paper and those in Leake *et al.*¹ is that in the present simulation the current sheet is never in steady state. This is indicated by the monotonic decrease in current sheet width throughout the simulation, as shown in Figure 2, panel (a), as well as the temporal evolution of the current sheet, shown in Figure 8. Hence, the steady state analysis, which leads to the reconnection rate being determined by a balance between outflow, ionization and recombination, is not strictly valid.

We now look at the temporal evolution of the reconnection rate in the current sheet. The normalized reconnection rate is defined by

$$M_{sim} \equiv \frac{\eta^* j_{max}}{v_A^* B_{up}}. \tag{20}$$

Here, j_{max} is the maximum value of the out of plane current density, j_z , located at $(x, y) = (x_j, 0)$. B_{up} is B_x evaluated at (x_j, δ_{sim}) , where δ_{sim} has already been defined as the half-width half-max in out of plane current density. v_A^* is the relevant Alfvén velocity defined using B_{up} and the total number

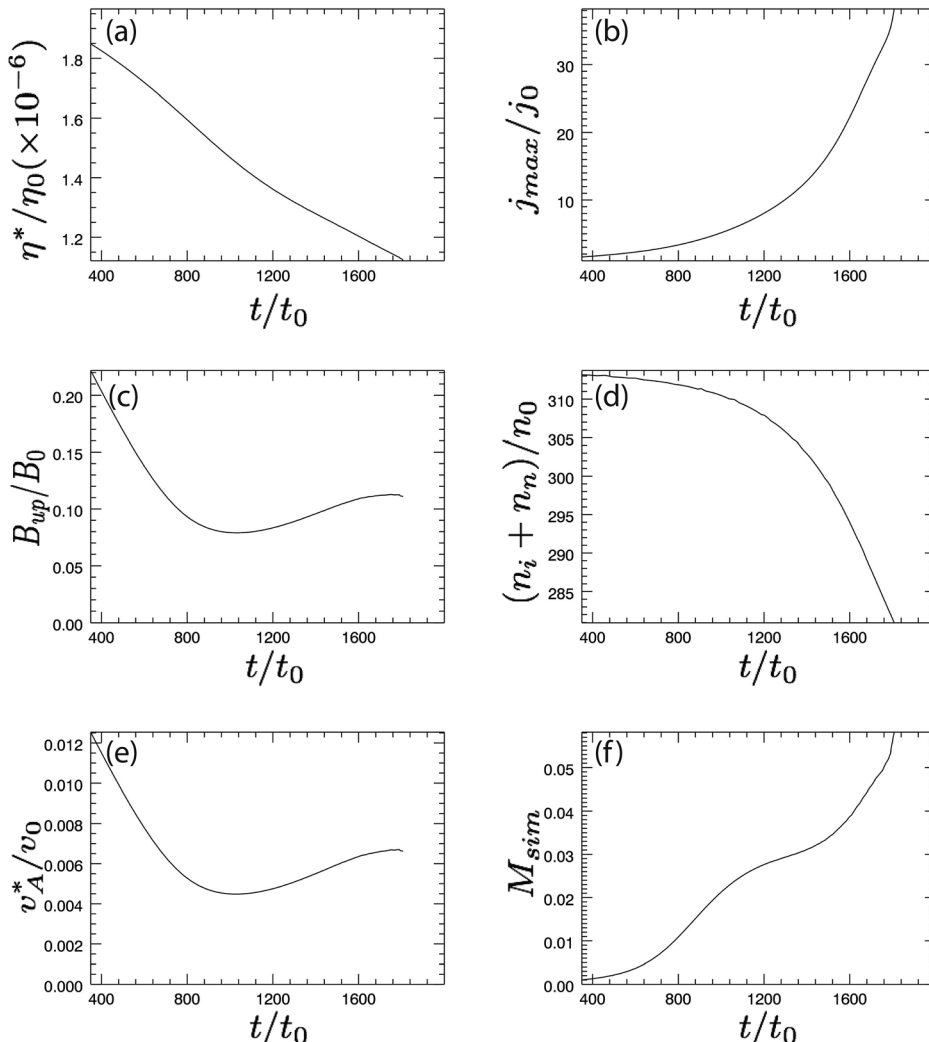


FIG. 8. Temporal evolution of the reconnection rate. Panel (a): Effective resistivity η^*/η_0 . Panel (b): j_{max}/j_0 , the maximum value of the current density, located at $(x, y) = (x_j, 0)$, within the reconnection region. Panel (c): B_{up}/B_0 where B_{up} is evaluated at (x_j, δ_{sim}) and δ_{sim} is the half-width at half-max of the current sheet. Panel (d): n^*/n_0 , the total density inside the current sheet at $(x_j, 0)$. Panel (e): v_A^*/v_0 , the current sheet Alfvén speed. Panel (f): $M_{sim} = \eta^* j_{max}/v_A^* B_{up}$.

density (n^*) at the location of j_{max} . To obtain a local estimate of resistivity we use

$$\eta^* = \frac{(\mathbf{R}_e^{ei} + \mathbf{R}_e^{en}) \cdot \hat{\mathbf{z}}}{en^*j_{max}}, \quad (21)$$

with $\mathbf{R}_e^{ei} + \mathbf{R}_e^{en}$ evaluated at the location of j_{max} . The six quantities η^* , j_{max} , n^* , B_{up} , v_A^* , and M_{sim} are shown as functions of time in Figure 8. The resistivity η^* has two contributions, one from electron-ion collisions and the other from electron-neutral collisions. Taking the ratio of these two terms gives

$$\frac{\nu_{en}}{\nu_{ei}} \approx \frac{3n_n \Sigma_{en}}{2n_i \Sigma_{ei}}, \quad (22)$$

where $\Sigma_{en} = 1.16 \times 10^{-19} \text{ m}^2$, and Σ_{ei} depends on electron temperature as was described in Sec. II A 1. The ion, electron, and neutral temperatures have been assumed equal to each other in this estimate. For the initial temperature of 8460 K, $\Sigma_{ei} = 1.2 \times 10^{-16} \text{ m}^2$, and at $t=0$, $n_n/n_i = 10^3$. This gives a ratio of $\frac{\nu_{en}}{\nu_{ei}} = 1.5$. At $t = 1780t_0$, the electron temperature is 9230 K, $\Sigma_{ei} = 1 \times 10^{-16} \text{ m}^2$ and $n_n/n_i = 80$, which gives a ratio of $\frac{\nu_{en}}{\nu_{ei}} = 0.13$. Thus, initially the electron-neutral contribution is of the same order as the electron-ion contribution, but toward the end of the simulation, the electron-ion contribution dominates due to the increase in ion density.

The increase of the current density with time is primarily responsible for the monotonic increase of M_{sim} , from 0.001 at $t = 400t_0$ to 0.056 at the end of the simulation. The Sweet-Parker model for magnetic reconnection predicts the normalized reconnection rate $M = 1/\sqrt{S}$, where S is the Lundquist number of the reconnecting current sheet. The Lundquist number in this simulation, S_{sim} , is defined by

$$S_{sim} \equiv \frac{v_A^* L_{sim}^*}{\mu_0 \eta^*}. \quad (23)$$

At $t = 1750 \text{ s}$, before the plasmoid instability has developed, $\eta^* = 1.205 \times 10^{-6} \eta_0$, $L_{sim}^* = 2.5L_0$, and $v_A^* = 0.0066v_0$, which gives a value of $S_{sim} = 1.37 \times 10^4$. Hence, the Sweet-Parker model would predict a reconnection rate of $1/\sqrt{1.7 \times 10^4} = 0.0085$. In this simulation, we see the reconnection rate rise from below 0.001 to above 0.048 at $t = 1750 \text{ s}$. As the current sheet width becomes less than λ_{ni} and the neutrals decouple from the ions, it is clear that a single-fluid Sweet-Parker theory is no longer applicable. The reconnection rates observed in this simulation are sufficient to explain the observed lifetimes and reconnection rates of spicules, but not chromospheric jets.

At $t = 1790t_0$, the current sheet becomes unstable to the secondary tearing mode, known as the plasmoid instability (e.g., Ref. 24). Figure 9 shows the ion and current density, and selected isocontours of A_z . A plasmoid can be seen at the origin at $t = 1803.5t_0$. The laminar current sheet can also be seen to break up into thinner current sheets. In the context of a single-fluid theory, Ref. 24 predicted that the onset of the plasmoid instability occurs when the aspect ratio decreases to 1/200 and this was the case in the multi-fluid simulations

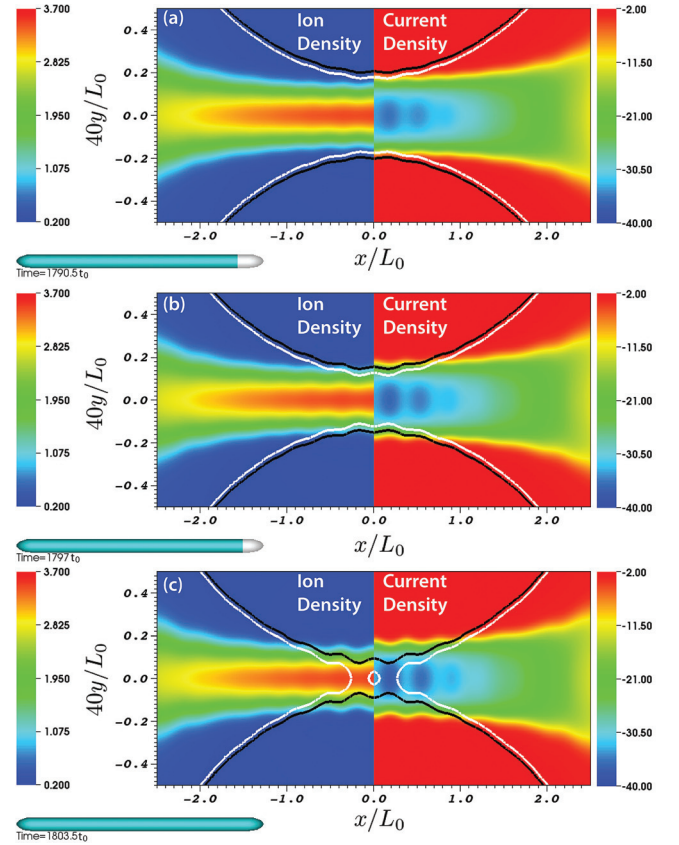


FIG. 9. Formation of plasmoids. Current density (j_z/j_0) on the right, and ion density n_i/n_0 on the left. The black line is the $A_z = -0.01245B_0L_0$ contour and the white line is the $A_z = -0.01237B_0L_0$ contour. Note that the y -coordinate is expanded by a factor of 40.

of Leake *et al.*¹ At $t = 1700t_0$, the aspect ratio $\sigma_{sim} \equiv \delta_{sim}/L_{sim}$ already is 1/500, yet the plasmoids are not observed until $t = 1790t_0$ when the aspect ratio has fallen further still. At this time, we do not have a thorough understanding of why the onset of the plasmoid instability is different between the present simulation and our previous work. However, we note that the magnetic Prandtl number, defined by the ratio of viscous to resistive diffusivity,

$$Pr = \frac{\xi_i/(m_i n_0)}{\eta/\mu_0}, \quad (24)$$

in this simulation is approximately 0.4. This is at least an order of magnitude lower than that used in Leake *et al.*,¹ where Pr ranged from 5 for high resistivity to 200 for low resistivity. The lower Pr in the simulation in this paper means that viscous diffusivity is less important and this allows for stronger shearing of the reconnection outflows that may lead to stabilization of the secondary tearing instability.²⁵ A detailed investigation of the stability of weakly ionized reconnection current sheets to secondary tearing instability is left to future work.

Figure 10 shows the reconnection rate M_{sim} and j_{max} in the interval $t = [1650, 1803.5]t_0$, i.e., a zoom in of Figure 8, panels (b) and (f). At $t = 1790t_0$, there is a change in the time derivative of j_{max} as the plasmoids create thinner current sheets and larger currents. This creates an increase in the

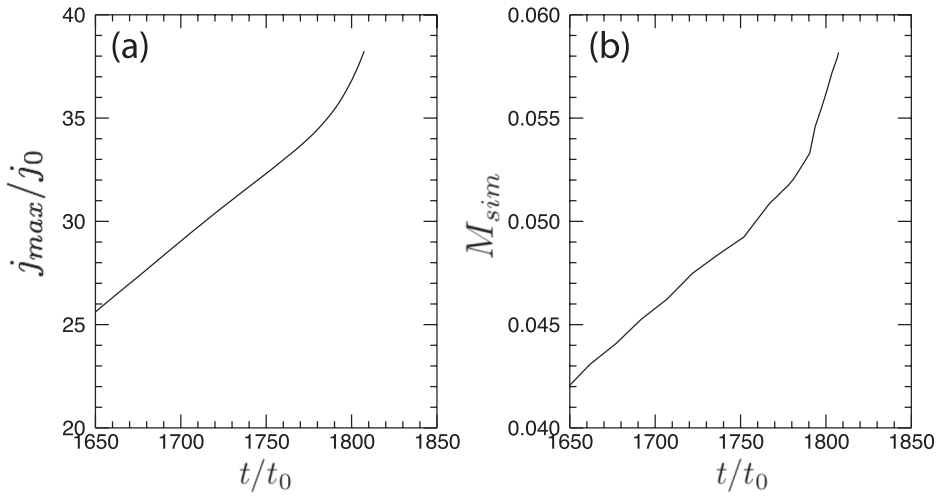


FIG. 10. Temporal evolution of the reconnection rate during the latter stages when the plasmoid instability sets in. Left panel: j_{max}/j_0 , the maximum value of the out of plane current density. Right panel: $M_{sim} = \eta j_{max}/v_A^* B_{up}$, the normalized reconnection rate.

reconnection rate. The further study of the non-linear evolution of the plasmoids is limited in this investigation, as the current sheet width approaches the limit of the resolution of the numerical simulation.

IV. DISCUSSION

In this paper, magnetic reconnection in the solar chromosphere is simulated using a partially ionized reacting multi-fluid plasma model, which is able to capture the physical effects of decoupling between the ion and neutral fluids, occurring when scales associated with the reconnection region become comparable to the neutral-ion collisional mean free path. The number densities, magnetic field strengths, ionization levels, and temperature are consistent with lower to middle chromospheric conditions in a quiet Sun region.

These simulations improve upon the earlier work of Leake *et al.*¹ by including the effects of charge-exchange interactions, and using more realistic values for the cross-sections of scattering collisions and transport coefficients. In addition, the resistivity η depends on the local plasma parameters, rather than being a fixed value. Even so, our simulation lies in the same regime as those of Leake *et al.*¹ This regime consists of an initial current sheet width δ_{sim} , which is much larger than the Sweet-Parker width δ_{SP} , which itself is comparable to the neutral-ion collisional mean free path

$$\delta_{sim(t=0)} \gg \delta_{SP} \sim \lambda_{ni}. \quad (25)$$

In this regime, the current sheet width tends towards the Sweet-Parker width δ_{SP} (and hence towards λ_{ni}). When the current sheet width becomes comparable to the neutral-ion mean free path, decoupling of neutrals from ions allows the sheet width to fall below both the Sweet-Parker width and the mean free path

$$\delta_{SP}, \lambda_{ni} > \delta_{sim}. \quad (26)$$

Once the current sheet width is smaller than the neutral-ion collisional mean free path, the steady state reconnection rate is determined by a combination of ion outflow and recombination. In the simulations of Leake *et al.*,¹ recombination

was found to be as important as outflow at removing ions from the reconnection region, and steady state reconnection rates faster than the Sweet-Parker prediction were seen. On the other hand, in the simulation presented in this paper, no steady state is achieved. Instead we find an instantaneous reconnection rate which is faster than the Sweet-Parker prediction due primarily to the separation of the current sheet width and the neutral-ion collisional scale and the resulting order of magnitude enhancement of the ion density in the current sheet with respect to the upstream value.

An important characteristic of the solar chromosphere is that it has a high degree of spatial variation of the plasma temperature and density due to stratification and horizontal structure, and also a high degree of spatial variation of the small scale magnetic field. This situation does not easily lend itself to investigating phenomena in a “typical” chromosphere. In particular, it is not clear that the regime we find in this simulation, where $\delta_{sim} < \lambda_{ni}$, is a ubiquitous occurrence in the chromosphere. To address this issue, we can estimate the altitude profiles of both the Sweet-Parker width and neutral-ion collisional mean free path using a semi-empirical 1D model of the quiet Sun,²⁶ and a few assumptions. The neutral-ion collisional mean free path depends on temperature and ion density via the thermal speed and neutral-ion collisional frequency. The temperature and density are provided by the 1D atmospheric model of Ref. 26. To obtain an altitude profile for the Sweet-Parker width we can replace the characteristic system size L with δ_{SP}/σ_{SP} in the equation $\delta_{SP} \approx \sqrt{\eta L/v_A \mu_0}$ to obtain

$$\delta_{SP} \approx \frac{\eta}{\sigma_{SP} v_A \mu_0}. \quad (27)$$

Taking an aspect ratio at which the plasmoid instability should theoretically set in gives a lower bound on the Sweet-Parker aspect ratio σ_{SP} and hence an upper bound on the Sweet-Parker width δ_{SP} . This critical value varies in the literature, and so we take two extremes, 1/1000 (of the order of the smallest value seen in the simulation in this paper), and 1/50 (values observed in high plasma-beta simulations by Ref. 27). An estimate of the magnetic field strength in the chromosphere is also required to estimate δ_{SP} in the chromosphere. We use the range [5,1000] G. Using these two sets of

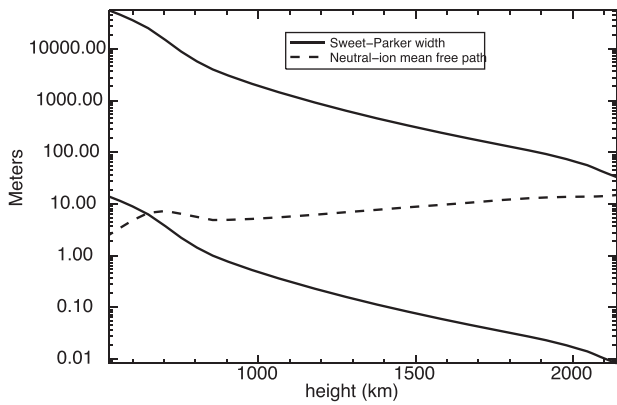


FIG. 11. Estimates of the Sweet-Parker width (δ_{SP}) and neutral ion collisional mean free path (λ_{ni}) using the FALC model of the solar chromosphere.²⁶ The solid lines show two extremes of the calculations of the resistive length. The higher value uses an aspect ratio of $\sigma = 1/1000$ and a field strength of 5 G, and the smaller uses a current sheet aspect ratio of $\sigma = 1/50$ and a field strength of 1000 G. The dot-dashed line is the neutral-ion collisional mean free path, λ_{ni} . This figure shows that for a range of heights in the chromosphere, the Sweet-Parker width can be larger than, but comparable to, the neutral-ion collisional mean free path, λ_{ni} .

extremes (one for σ_{SP} and one for magnetic field strength) gives a range of altitude profiles for δ_{SP} . Figure 11 depicts the two extreme profiles of δ_{SP} , as well as the altitude profile of the neutral-ion collisional mean free path. This plot shows that for the ranges of aspect ratios and magnetic field strengths considered here, the Sweet-Parker width can be greater than, but comparable to, the neutral-ion collisional mean free path in a height range of 650 to 2000 km above the solar surface. This essentially encompasses the entire chromosphere. Hence, the regime that our simulation self-consistently produces, where the reconnection transitions from being fully coupled to decoupled, is possible for a wide range of chromospheric conditions. This transition from coupled to decoupled reconnection is accompanied by an increase in the reconnection rate.

Recombination-aided fast reconnection in a weakly ionized plasma that is out of ionization balance was considered by Refs. 22 and 23. Those theoretical investigations modeled the reconnection region as 1D and time independent with a width which was already less than the neutral-ion collisional mean free path (denoted L_{AD} in Ref. 23, and denoted λ_{ni} in this paper). Hence, the reconnection region was assumed to already have an excess of ions due to the decoupling of neutrals and ions. The simulation performed in this paper shows that for initial conditions relevant to the solar chromosphere, and a current sheet initially thicker than λ_{ni} , the system can self-consistently evolve to a current sheet width thinner than λ_{ni} . However, in this simulation, the recombination is less important than the outflow of ions, whereas in the 1D models of Refs. 22 and 23, the recombination was assumed to be the only sink for the ions in the reconnection region.

As in Leake *et al.*,¹ we measure “fast” reconnection rates close to $M = 0.1$. Generally, fast reconnection requires either Hall, kinetic, or localized resistivity effects,²⁸ or secondary tearing.^{24,29} Hall effects are negligible in this simulation as the ion inertial scale is less than the smallest current sheet width in this simulation. In addition, the onset of the

secondary tearing mode only increases the reconnection rate after $t = 1750$ by approximately 15%. In this simulation, we obtain normalized reconnection rates above 0.05 without either Hall effects or secondary tearing. Given that we also have neither a localized increase in resistivity in the reconnection site, nor kinetic effects, we can conclude that fast reconnection is obtained solely due to the decoupling of neutrals from ions when the current sheet width is less than the neutral-ion collisional mean free path. Note, however, that Figure 11 shows that the Sweet-Parker width can be as low as 1 cm near the top of the chromosphere, and hence potentially smaller than the ion inertial scale, and so it is possible for Hall effects to be important in some regions of the chromosphere, even though they are not in this particular simulation. Indeed recent laboratory experiments have shown that fast Hall reconnection can occur in weakly ionized plasmas.³⁰ Also, Refs. 31 and 32 showed via an analytic three-fluid model, that the transition to fast reconnection in weakly ionized plasmas due to the Hall effect can occur at lower Lundquist numbers than for single-fluid MHD. However, they consider larger Lundquist numbers ($>10^7$) than the simulation in this paper, and so the Sweet-Parker width is much smaller. Further work will investigate the onset of Hall reconnection in weakly ionized plasmas using the multi-fluid model presented in this paper.

The values of reconnection rate in this simulation are comparable to estimated rates from observations of spicules. This fact along with the fact that we see outflows of 3 km/s, comparable to observations of chromospheric jets, provides strong evidence that weakly ionized magnetic reconnection is capable of explaining the ubiquitous observance of transient phenomena in the chromosphere. The plasmoids observed in this simulation, when the current sheet becomes unstable to the secondary tearing mode (plasmoid instability), may also explain the observations of “blobs” of plasma within chromospheric jet outflows.^{10–12} This paper shows that non-equilibrium two fluid (ion + neutral) effects can be important for reconnection on scales larger than those at which Hall and kinetic effects become important in the chromosphere. Hence, it is vital that studies of chromospheric reconnection, and the subsequent dynamics and heating this reconnection causes, include ion-neutral collisional physics, as has been done in the model presented in this paper.

ACKNOWLEDGMENTS

This work has been supported by the NASA Living With a Star & Solar and Heliospheric Physics programs, the ONR 6.1 Program, and by the NRL-*Hinode* analysis program. The simulations were performed under a grant of computer time from the DoD HPC program. We also thank Eric T. Meier for useful discussions.

¹J. E. Leake, V. S. Lukin, M. G. Linton, and E. T. Meier, “Multi-fluid simulations of chromospheric magnetic reconnection in a weakly ionized reacting plasma,” *Astrophys. J.* **760**, 109 (2012).

²E. G. Zweibel and M. Yamada, “Magnetic reconnection in astrophysical and laboratory plasmas,” *Annu. Rev. Astron. Astrophys.* **47**, 291–332 (2009).

- ³R. L. Moore, A. C. Sterling, J. W. Cirtain, and D. A. Falconer, "Solar x-ray jets, type-II spicules, granule-size emerging bipoles, and the genesis of the heliosphere," *Astrophys. J. Lett.* **731**, L18 (2011).
- ⁴A. L. Borg, N. Østgaard, A. Pedersen, M. Øieroset, T. D. Phan, G. Germany, A. Aasnes, W. Lewis, J. Stadsnes, E. A. Lucek, H. Rème, and C. Mouikis, "Simultaneous observations of magnetotail reconnection and bright X-ray aurora on 2 October 2002," *J. Geophys. Res., [Space Phys.]* **112**, A06215, doi:10.1029/2006JA011913 (2007).
- ⁵S. E. Milan, G. Provan, and B. Hubert, "Magnetic flux transport in the Dungey cycle: A survey of dayside and nightside reconnection rates," *J. Geophys. Res., [Space Phys.]* **112**, 1209 (2007).
- ⁶A. G. Emslie, B. R. Dennis, G. D. Holman, and H. S. Hudson, "Refinements to flare energy estimates: A followup to "Energy partition in two solar flare/CME events" by A. G. Emslie *et al.*" *J. Geophys. Res., [Space Phys.]* **110**, A11103, doi:10.1029/2005JA011305 (2005).
- ⁷S. Tanuma and K. Shibata, "Internal shocks in the magnetic reconnection jet in solar flares: Multiple fast shocks created by the secondary tearing instability," *Astrophys. J. Lett.* **628**, L77–L80 (2005).
- ⁸E. N. Parker, "Sweet's mechanism for merging magnetic fields in conducting fluids," *J. Geophys. Res.* **62**, 509–520, doi:10.1029/JZ062i004p00509 (1957).
- ⁹P. A. Sweet, *Electromagnetic Phenomena in Cosmical Physics* (Cambridge Univ. Press, New York, 1958), p. 123.
- ¹⁰K. Shibata, T. Nakamura, T. Matsumoto, K. Otsuji, T. J. Okamoto, N. Nishizuka, T. Kawate, H. Watanabe, S. Nagata, S. UeNo, R. Kitai, S. Nozawa, S. Tsuneta, Y. Suematsu, K. Ichimoto, T. Shimizu, Y. Katsukawa, T. D. Tarbell, T. E. Berger, B. W. Lites, R. A. Shine, and A. M. Title, "Chromospheric anemone jets as evidence of ubiquitous reconnection," *Science* **318**, 1591 (2007).
- ¹¹K. A. P. Singh, H. Isobe, K. Nishida, and K. Shibata, "Systematic motion of fine-scale jets and successive reconnection in solar chromospheric anemone jet observed with the solar optical telescope/hinode," *Astrophys. J.* **760**, 28 (2012).
- ¹²K. A. P. Singh, H. Isobe, N. Nishizuka, K. Nishida, and K. Shibata, "Multiple plasma ejections and intermittent nature of magnetic reconnection in solar chromospheric anemone jets," *Astrophys. J.* **759**, 33 (2012).
- ¹³A. C. Sterling, "Solar spicules: A review of recent models and targets for future observations - (invited review)," *Solar Phys.* **196**, 79–111 (2000).
- ¹⁴E. T. Meier, "Modeling plasmas with strong anisotropy, neutral fluid effects, and open boundaries," Ph.D. dissertation, University of Washington (2011).
- ¹⁵C. F. Barnett, H. T. Hunter, M. I. Fitzpatrick, I. Alvarez, C. Cisneros, and R. A. Phaneuf, "Atomic data for fusion. Volume 1: Collisions of H, H₂, He and Li atoms and ions with atoms and molecules," NASA STI/Recon Tech. Rep. N **91**, 13238 (July 1990).
- ¹⁶B. T. Draine, W. G. Roberge, and A. Dalgarno, "Magnetohydrodynamic shock waves in molecular clouds," *Astrophys. J.* **264**, 485–507 (1983).
- ¹⁷J. E. Leake and T. D. Arber, "The emergence of magnetic flux through a partially ionized solar atmosphere," *Astron. Astrophys.* **450**, 805–818 (2006).
- ¹⁸T. D. Arber, M. Haynes, and J. E. Leake, "Emergence of a flux tube through a partially ionized solar atmosphere," *Astrophys. J.* **666**, 541–546 (2007).
- ¹⁹A. Brandenburg and E. G. Zweibel, "The formation of sharp structures by ambipolar diffusion," *Astrophys. J. Lett.* **427**, L91–L94 (1994).
- ²⁰T. D. Arber, G. J. J. Botha, and C. S. Brady, "Effect of solar chromospheric neutrals on equilibrium field structures," *Astrophys. J.* **705**, 1183–1188 (2009).
- ²¹J. E. Vernazza, E. H. Avrett, and R. Loeser, "Structure of the solar chromosphere. III—Models of the EUV brightness components of the quiet-sun," *Astrophys. J. Suppl. Ser.* **45**, 635–725 (1981).
- ²²E. T. Vishniac and A. Lazarian, "Reconnection in the interstellar medium," *Astrophys. J.* **511**, 193–203 (1999).
- ²³F. Heitsch and E. G. Zweibel, "Fast reconnection in a two-stage process," *Astrophys. J.* **583**, 229–244 (2003).
- ²⁴N. F. Loureiro, A. A. Schekochihin, and S. C. Cowley, "Instability of current sheets and formation of plasmoid chains," *Phys. Plasmas* **14**, 100703 (2007).
- ²⁵S. V. Bulanov, S. I. Syrovatskiĭ, and J. Sakai, "Stabilizing influence of plasma flow on dissipative tearing instability," *Sov. J. Exp. Theor. Phys. Lett.* **28**, 177 (1978).
- ²⁶J. M. Fontenla, E. Avrett, G. Thuillier, and J. Harder, "Semiempirical models of the solar atmosphere. I. The quiet- and active sun photosphere at moderate resolution," *Astrophys. J.* **639**, 441–458 (2006).
- ²⁷L. Ni, U. Ziegler, Y.-M. Huang, J. Lin, and Z. Mei, "Effects of plasma β on the plasmoid instability," *Phys. Plasmas* **19**, 072902 (2012).
- ²⁸J. Birn, J. F. Drake, M. A. Shay, B. N. Rogers, R. E. Denton, M. Hesse, M. Kuznetsova, Z. W. Ma, A. Bhattacharjee, A. Otto, and P. L. Pritchett, "Geospace Environment Modeling (GEM) magnetic reconnection challenge: resistive tearing, anisotropic pressure and Hall effects," *J. Geophys. Res.* **106**, 3715, doi:10.1029/1999JA900449 (2001).
- ²⁹Y.-M. Huang and A. Bhattacharjee, "Scaling laws of resistive magnetohydrodynamic reconnection in the high-Lundquist-number, plasmoid-unstable regime," *Phys. Plasmas* **17**, 062104 (2010).
- ³⁰E. E. Lawrence, H. Ji, M. Yamada, and J. Yoo, "Laboratory study of hall reconnection in partially ionized plasmas," *Phys. Rev. Lett.* **110**, 015001 (2013).
- ³¹L. M. Malyskin and E. G. Zweibel, "Onset of fast magnetic reconnection in partially ionized gases," *Astrophys. J.* **739**, 72 (2011).
- ³²E. G. Zweibel, E. Lawrence, J. Yoo, H. Ji, M. Yamada, and L. M. Malyskin, "Magnetic reconnection in partially ionized plasmas," *Phys. Plasmas* **18**, 111211 (2011).